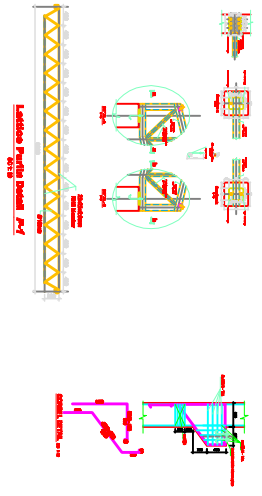
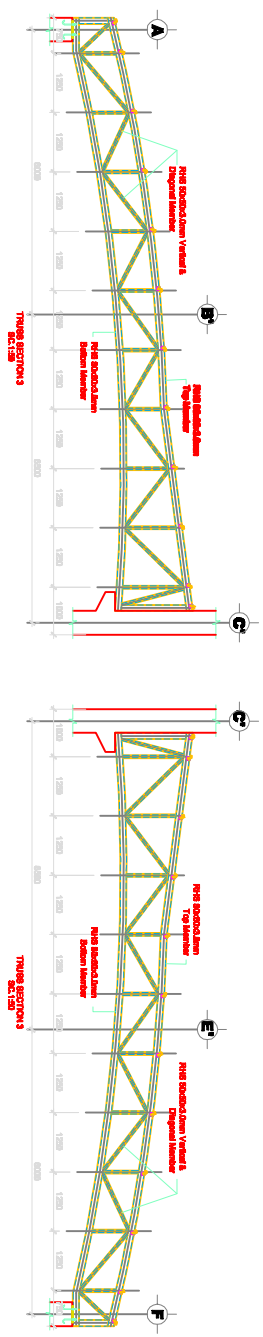


RAFTER TRUSS LAYOUT PLAN
SCALE: 1:500



MATERIAL USED FOR TRUSSES

- Ø1- TOP AND BOTTOM MEMBERS 80X80X3.0mm
- Ø2- VERTICAL AND DIAGONAL MEMBERS 50X50X3.0mm
- Ø3- VERTICAL MEMBERS 50X50X3.0mm
- Roofing – ECA-400 t=0.5mm

GENERAL NOTES

- * Minimum thickness of weld 3mm
- * Bolt strength as specified
- * Trusses should be welded when connected to each other
- * Use 5mm thick connection plate for length > 6m.
- * Provide a camber of 50mm at the center.
- * All Measurements are in mm, unless specified.
- * No scaling

NO.	REVISION	DATE	BY	CHECKED

Project: **Commercial, Warehouse**
 ADDRESS: **A.A. NIPASHIK LAYO SUB C, KEBELE OJI, LEBU AREA, STONE ROCK OFFICE**

CLIENT: **AFRICA UNION COMMISSION**

DESIGNED BY	DESIGNED
CHECKED BY	CHECKED
DATE	DATE
SCALE	SCALE
APPROVED BY	APPROVED
DATE	DATE

ST

5/5