

# AFRICAN HUMAN RIGHTS MEMORIAL BUILDING

## DESIGN REPORT

### INTRODUCTION

The inception to put a memorial garden commemorating the numerous atrocities that have plagued the continent in the past has been an agenda for the African union for more than fifteen years. Africa's history is an unblemished and absolute testament to the resolute and unwavering will of the human spirit. A continent that has endured unparalleled human rights violation is once again rising to the notion of African Unity.



The African Union Human Rights Memorial Site (AUHRM) design depicted above shows the Africa's commitment in overcoming these challenges and moving forward towards a brighter future. With five focus areas in genocide, slave trade, apartheid colonization and red terror as groundwork, the AUHRM building has been envisioned as an embodiment of regrettable past on the mend heading towards a redeemed outlook and pan Africanism.

---

By deploying a minimal intervention on the site, the design is approached to create an emphasis on the monument. As an auxiliary structure, the annex building is designed to give prominence to the monument and provide a background for the ideologies portrayed in the monument.



INTRODUCTION

AUHRM | Human Right Memorial Museum

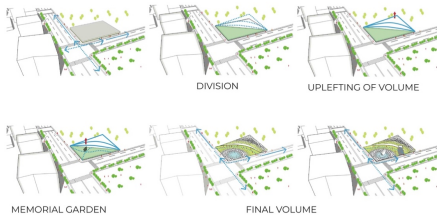
The African Union Human Rights Memorial Site (AUHRM) design depicted here show the Africa's commitment in overcoming these challenges and moving forward towards a brighter future. With five focus areas in genocide, slave trade, apartheid colonization and red terror as groundwork, the AUHRM building has been envisioned as an embodiment of regrettable past on the mend heading towards a redeemed outlook and pan Africanism.

CONCEPT

PUBLIC +



FORM EVOLUTION



## SUSTAINABILITY

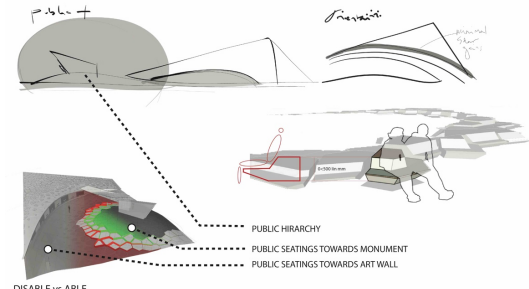
Sustainability architecture primarily focus on the provision of various elements in natural lighting, shades, ventilation and use of solar and alternative energies as source to create an environmental friendly and sustainable structure.

Here in the design of the AUHRM building several elements of sustainable architecture have been incorporated.

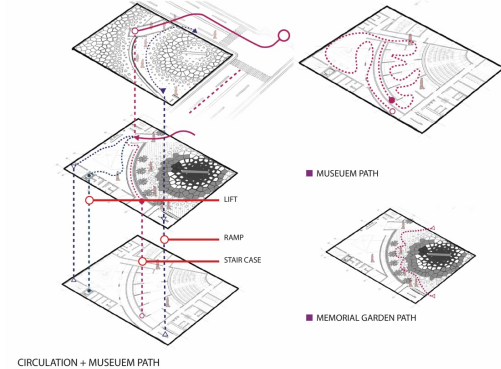
### Sustainability Concept

Public | Social Sustainability | Passive design | Solar Gains and collections | Sound insulation | AUHRM | Human Right Memorial Museum

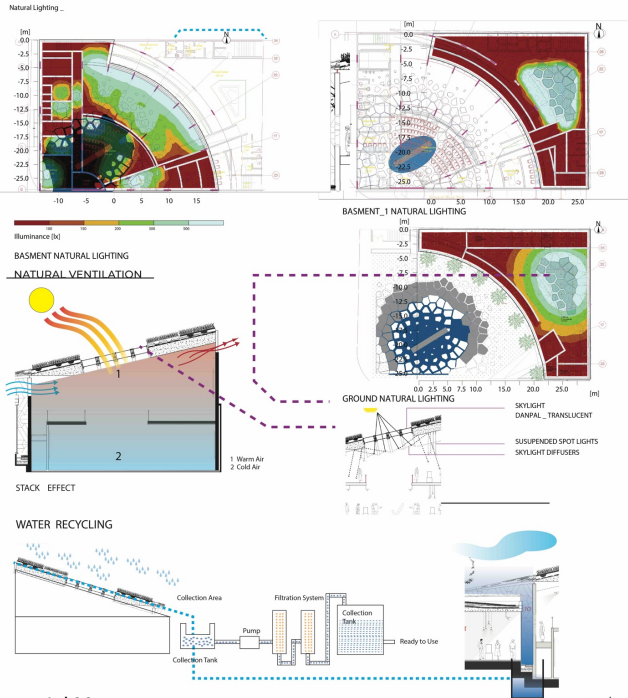
#### SOCIAL SUSTAINABILITY



#### DISABLE vs ABLE



#### LIGHTING



## Natural Light

The lighting in the interior space of the annex building is illuminated via a natural light that enters through a shallow opening across the front stretch of the building façade. This continuous opening provides a natural lighting that also helps maintain a natural ambience in the museum’s permanent gallery and functional units.

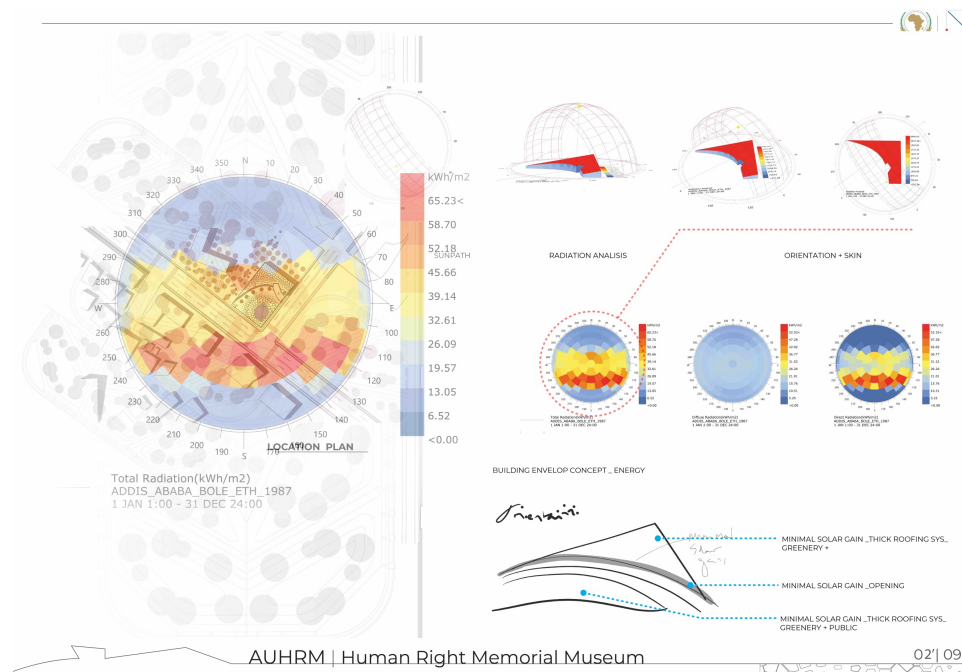
Sky light openings on the roof of the building structure help further illumine the cultural center, the temporary exhibition space, lobby and reception on the ground and basement floors. Further intermittent openings dotted on the roof accentuate lighting in the multipurpose hall and workshop.

The implementation lighting be it natural or artificial in the design has been based on an analysis conducted in simulation. The requirement of each functional unit in the museum has been tailored to standards.

## Thermal Gain

Various techniques have been utilized in the design of the project to reduce thermal gain and create a suitable temperature inside and in the surrounding zone. The indigenous and medicinal trees and shrubs planted in front, along the side and in front of the building maintain a buffer zone that retains much of the solar heat present

The artificial landscape designed contains several layers that minimize and deter the thermal energy from the outside by ensuing reduction of passive solar gain.



## Green Façade

The facade of the building is designed at best to incorporate greenery elements that are essential to create an environment that is both aesthetically appealing and functionally relevant structure in the design. This façade also has an insulating effect that maintains lower temperatures and reduced fluctuations in the building.





## Green Roof

An accessible green roof has been incorporated in the design to create an additional sustainable feature of the design. Furthermore, the space is provided with a seating area that helps visitors maintain a clear view of the sculpture and the surrounding.

## Able vs Disable

The design is created to deliver the same experience for both abled and disabled visitors in the museum. This is done through provision of standard ramps for both visitors and staff.

## Security

Security is strengthened through a single access security point in to the premise. As the museum is located in the premise of the African Union, this measure is taken to ensure the appropriate and standard security required. By the organization and protection against vandalism and unauthorized access.

The consideration of a flexible design is issued for various considerations of security measures that can be taken in the future,

## Emergency Exit

Two emergency exit points have been provided in the design that directly lead to the outside in case of emergency.

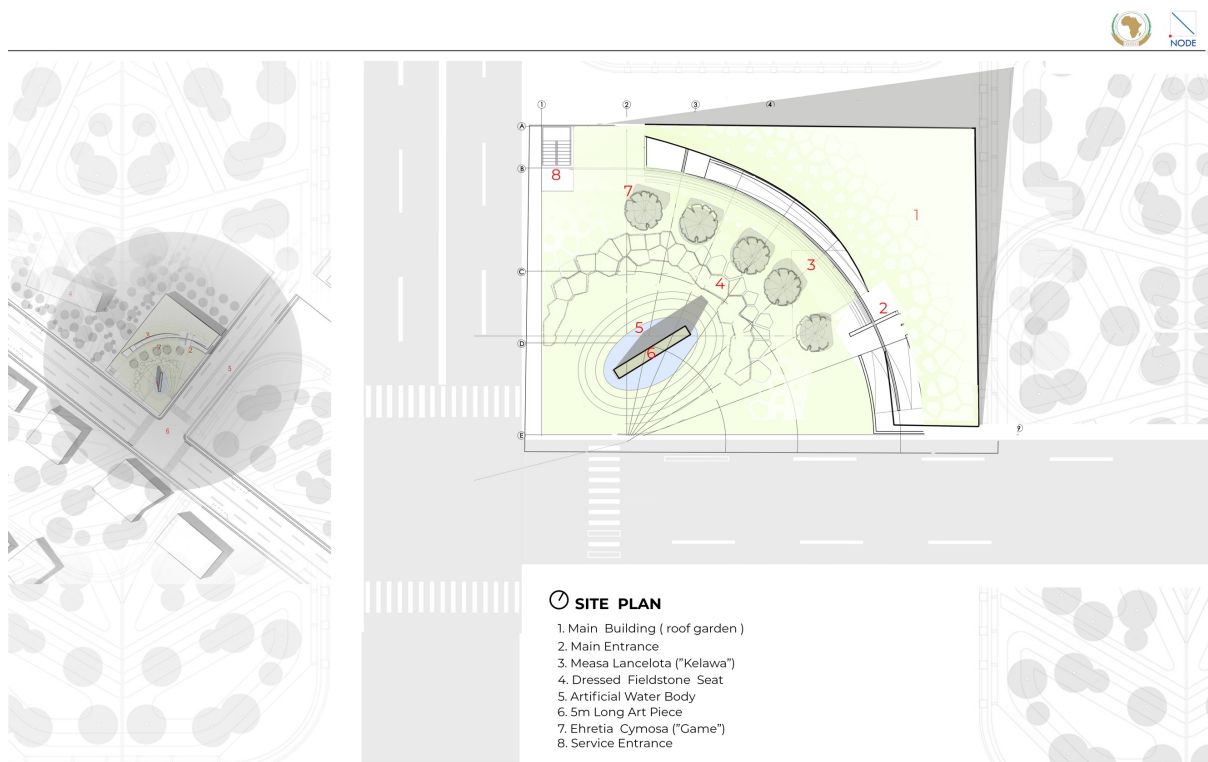


## LANDSCAPE

The vast opening in the front of the annex building is designed to create a space that increases public interaction with the monument, the museum and the entire memorial center.

Seats that are integrated with the landscape's around the sculpture having different heights ranging from (10 to 50 cm) and maintain a pattern providing a resting area and a contemplation zone. The greenery is drafted as a space that is pleasant and at the same time inviting for further exploration and commune.

The trees planted in the front façade of the memorial center provide shade and seating area for visitors, the remembrance Zone. Passages ways are designed right alongside the trees for ease of access and preservation and longevity of the greenery.



The sculpture that represents the 5 atrocities that the museum concept is based on has been used as a center piece in the Landscape Design. The object focus is towards the sculpture. The landscape surfaces selected are chosen in a way to represent the general land characters found in Africa. Water, Dry land (represented by stone) and grass (savannah). These surfaces enclose the sculpture making it the most principal structure in the site. In addition, this arrangement of the landscape surfaces suggest that the sculpture has a sense of movement, sailing through the landscape.

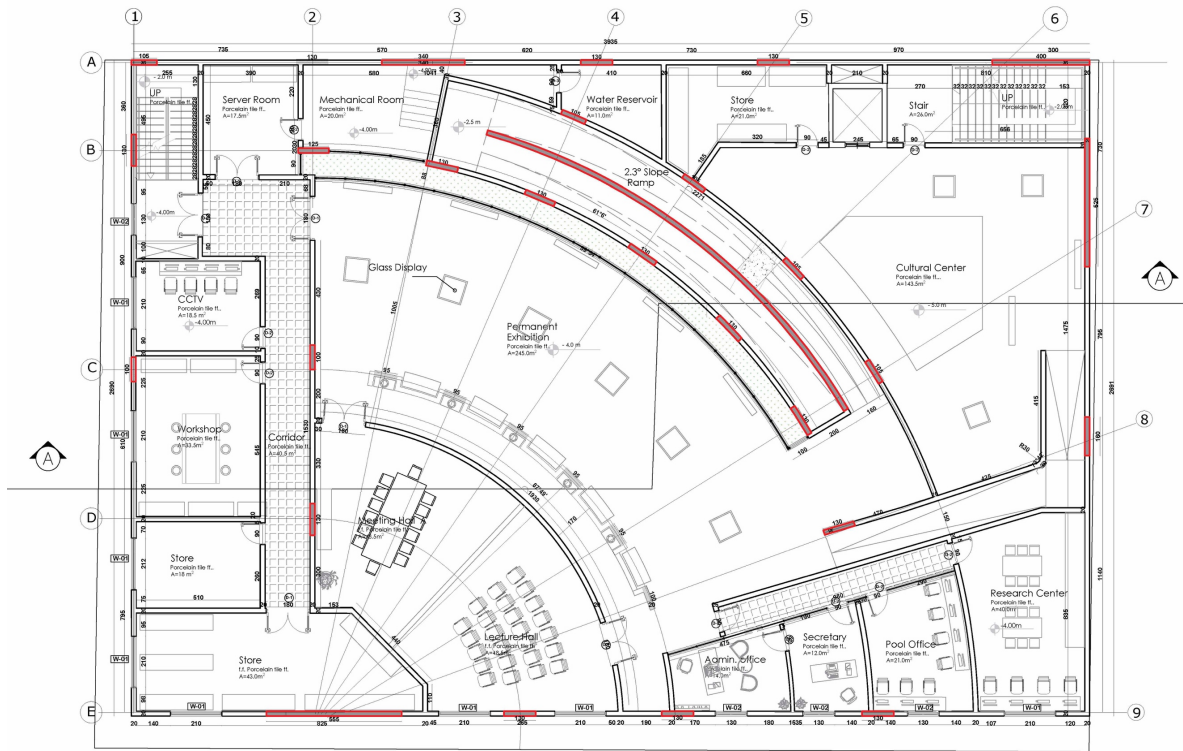
The vertical structures (trees) have dual purposes. The first medicinal values. second on structural merit. The trees selected have medium height (almost shrub like height) and have lesser densities compared to other trees. so as to not block direct view of the art wall.

Lighting intensity is designed in order of the spaces they illuminate. The sculpture being the most important structure, is illuminated by a more intensified but diffused blue light. This acts as a background.

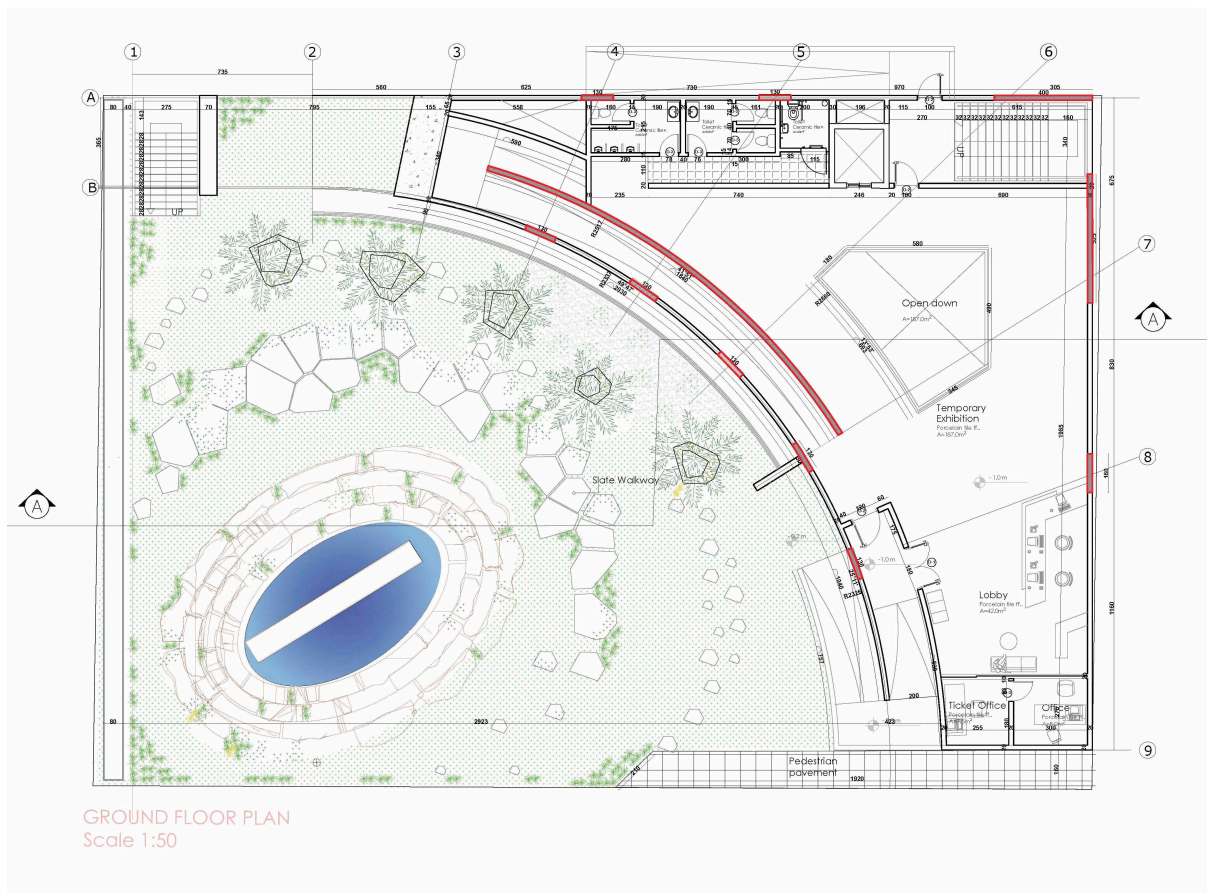




# FUNCTION

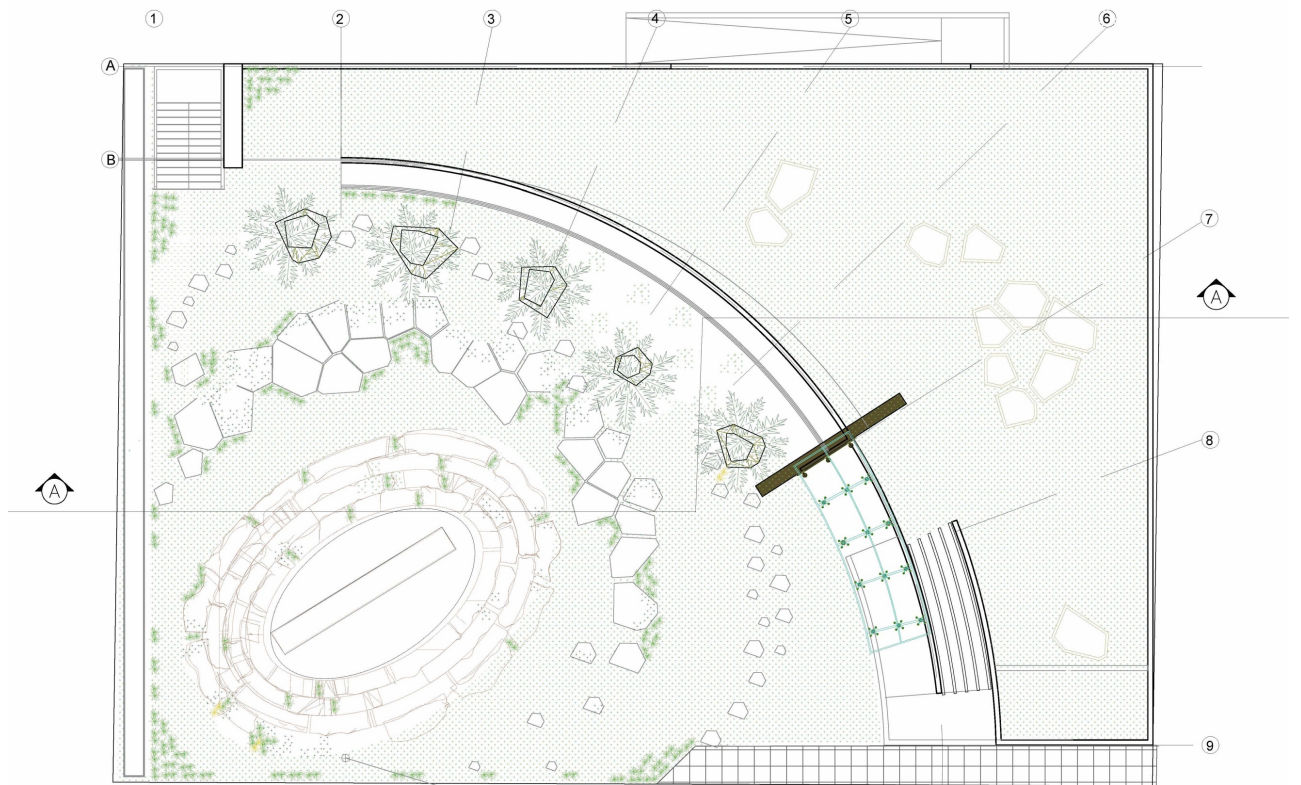


BASEMENT FLOOR PLAN  
Scale 1:50

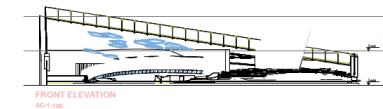


GROUND FLOOR PLAN  
Scale 1:50

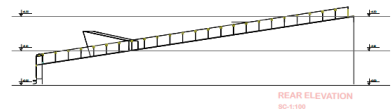




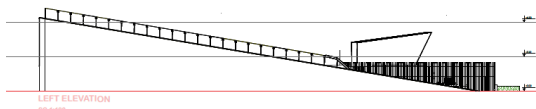
ROOF PLAN  
Scale 1:50



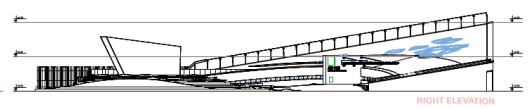
FRONT ELEVATION  
SC 1:100



REAR ELEVATION  
SC 1:100



LEFT ELEVATION  
SC 1:100



RIGHT ELEVATION  
SC 1:100

