



WAY FORWARD AND CLOSING

Africa CDC Workshop on Innovative Approaches to Establishing and Strengthening Regional Integrated Surveillance and Laboratory Networks for Disease Control, Prevention and Clinical Care in Africa

March 27 - 29, 2017

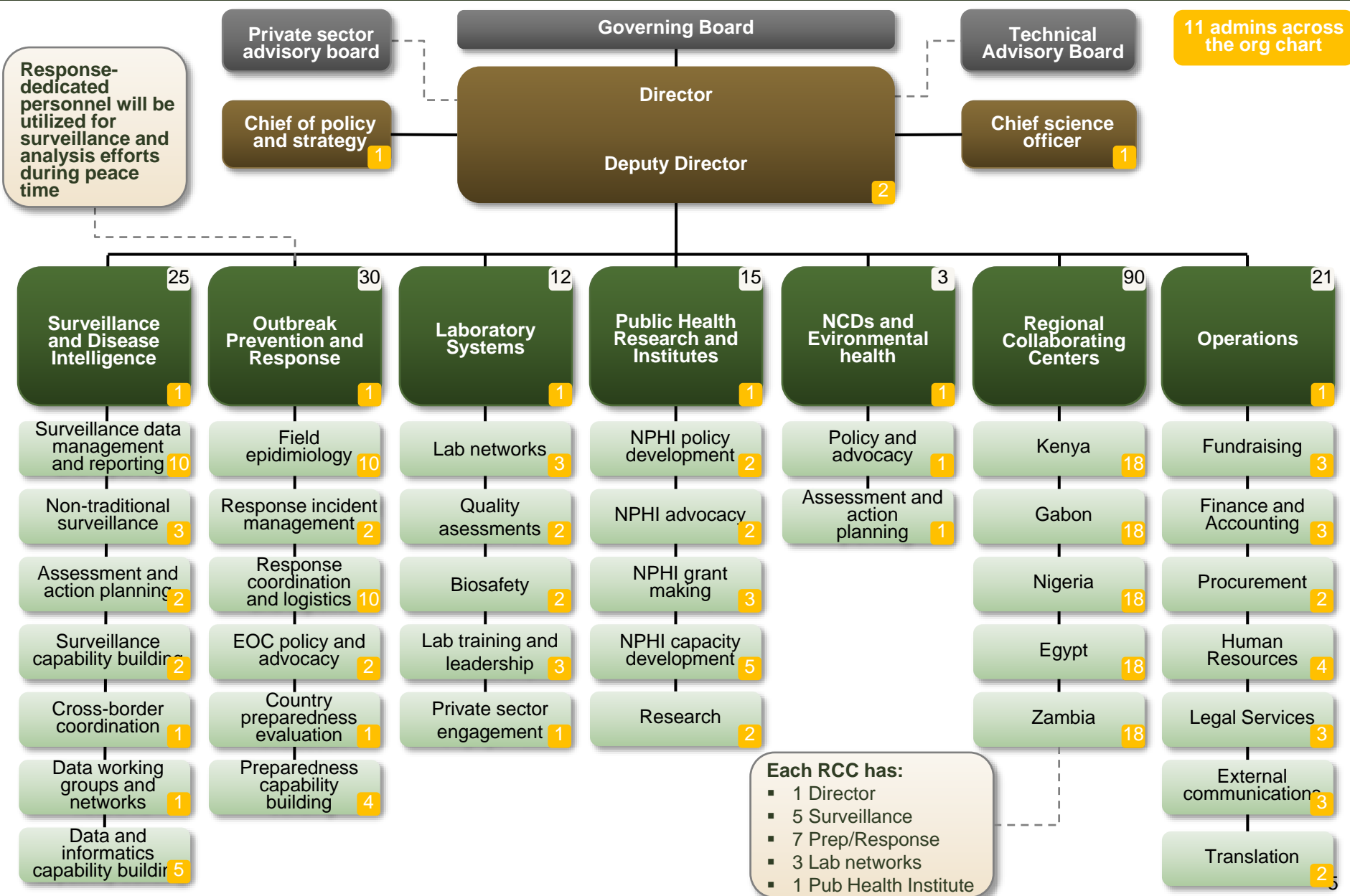
Outline:

- Recap of Africa CDC Structure
- Mission
- Vision
- Organization Structure
- Establishing Networks
- Scorecard
- Africa CDC Committees

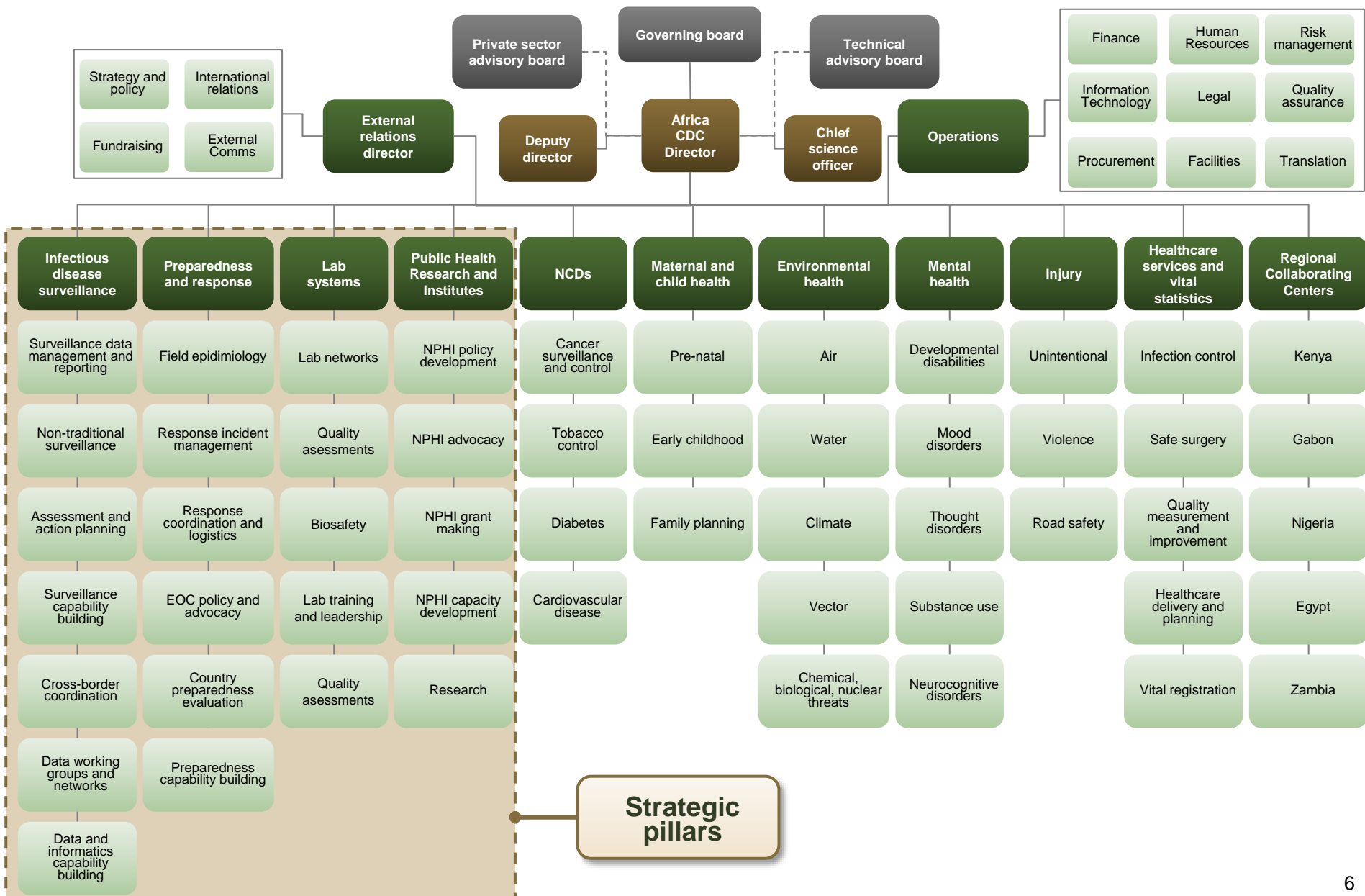
Building an integrated, safer, healthier, and stronger Africa, where Member states are capable of effectively responding to outbreaks and other public health threats

**Strengthen Africa's capacity and institutions
to detect and respond to health threats
through partnerships, science, policy, and
data-driven interventions and programs**

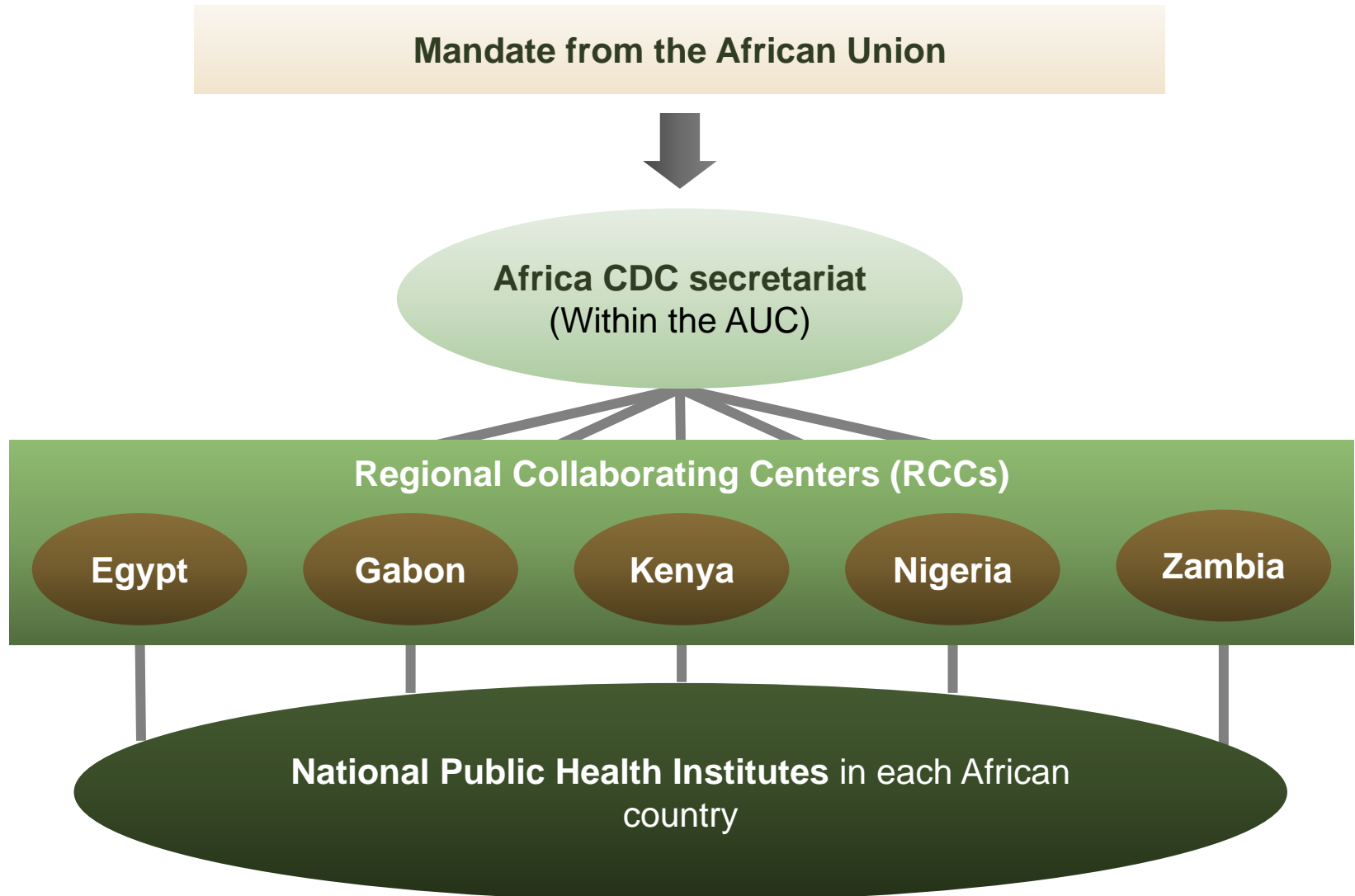
6 Medium-term organizational chart for Africa CDC (3-5 years)



6 Long-term organizational chart for Africa CDC (10-15 years)

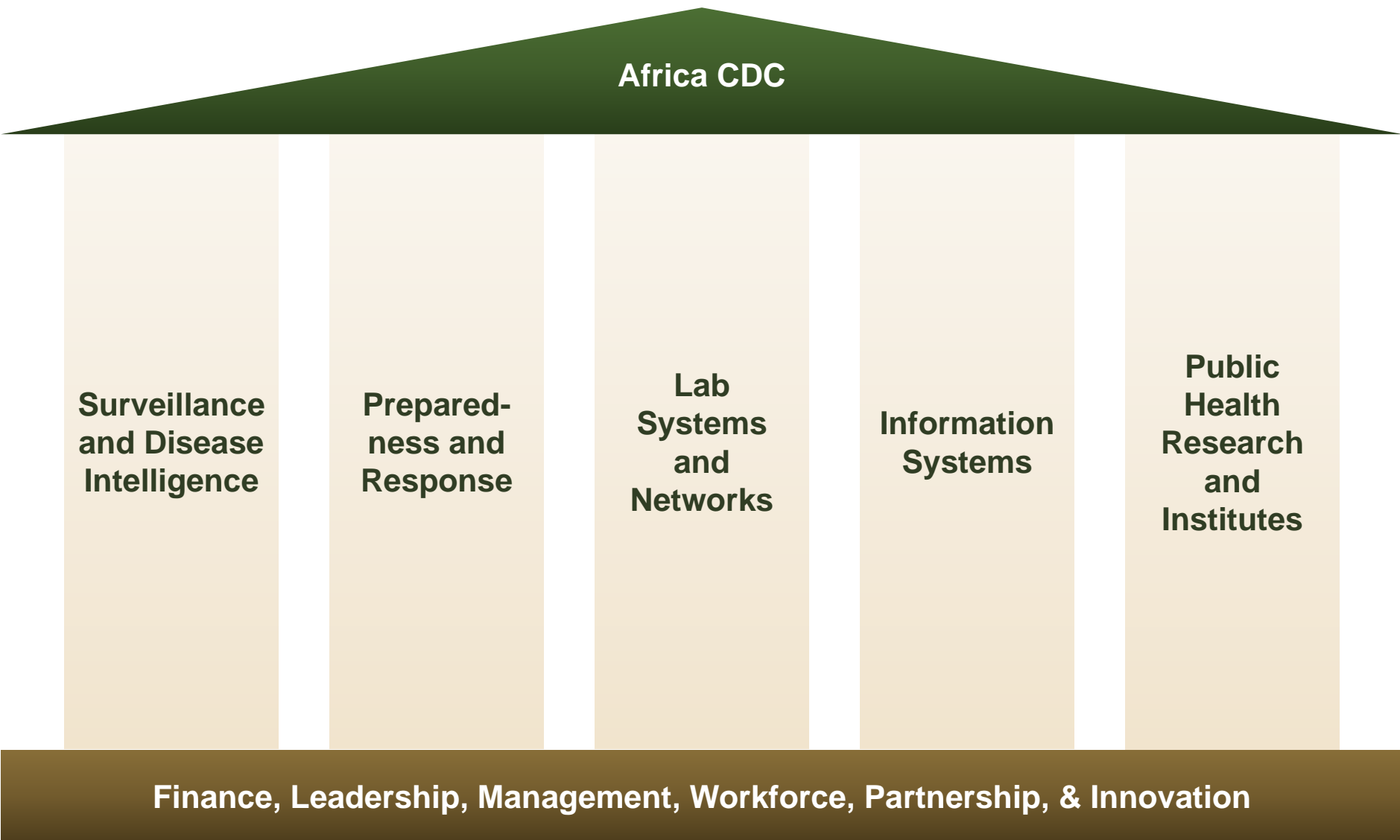


Africa CDC Operating Model

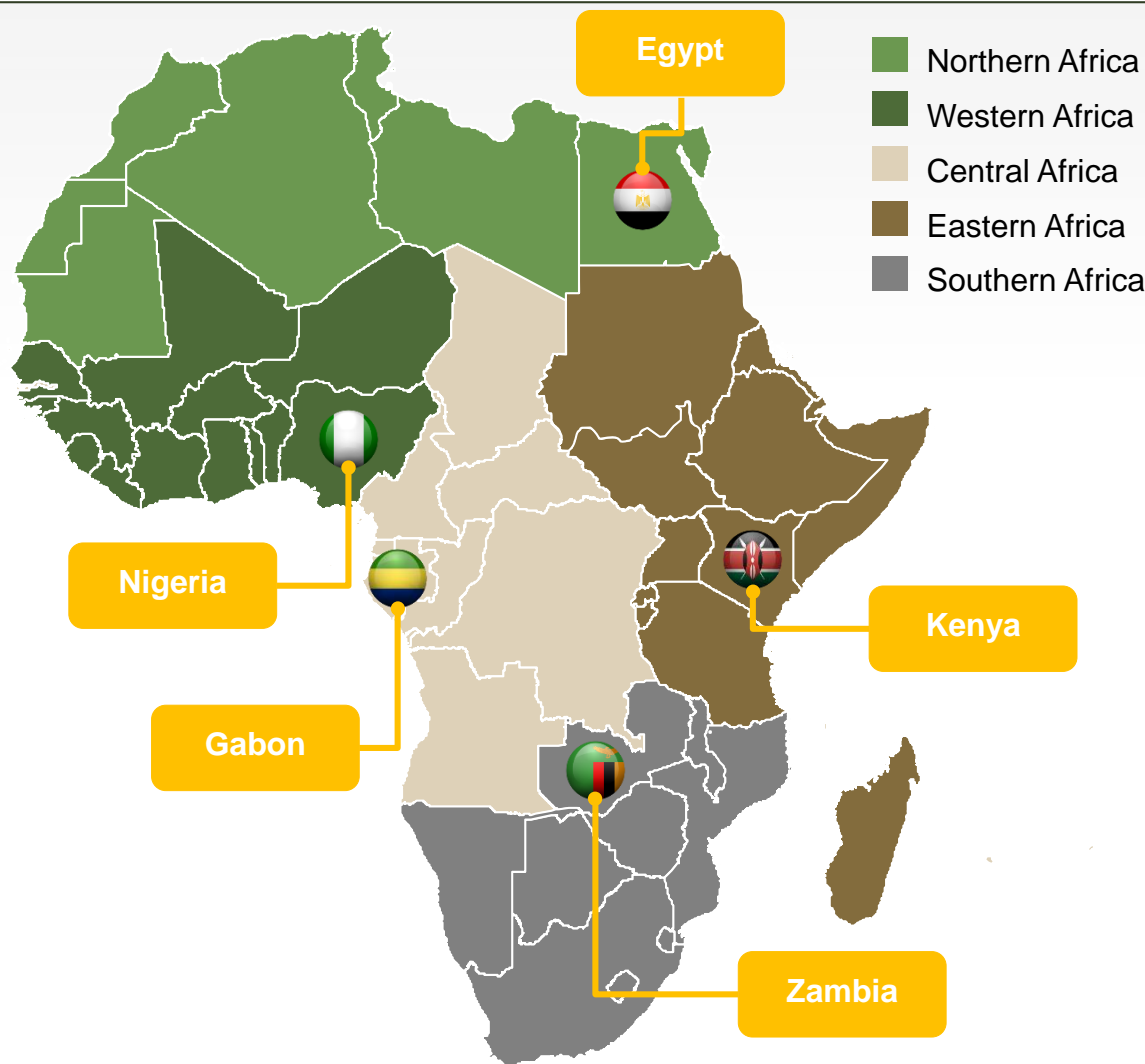


Note: Roughly 24 African have formally established NPHIs and joined the International Association of National Public Health Institutes (IANPHI)

4 Five strategic pillars of the Africa CDC



Africa CDC operating model

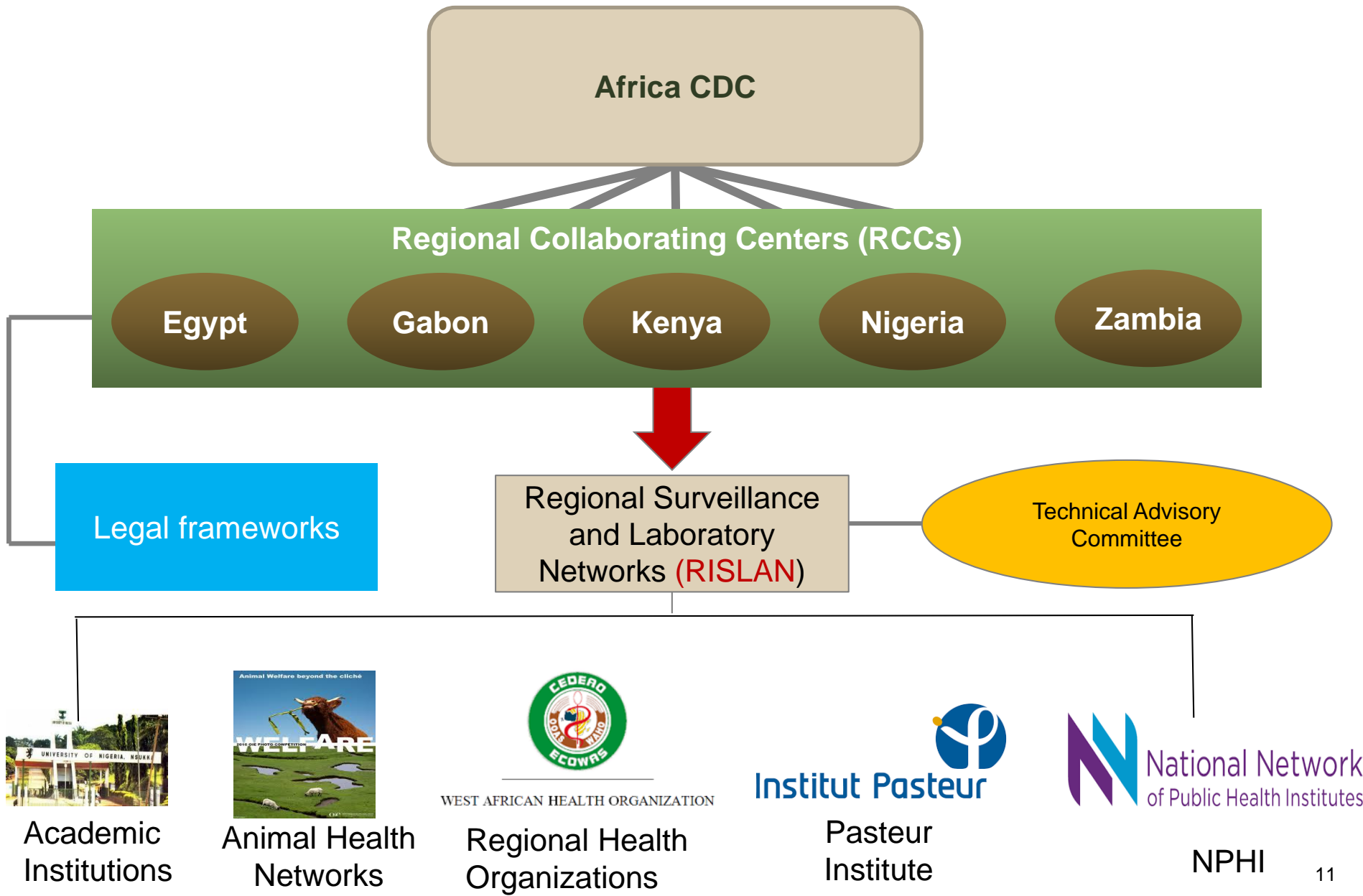


Activities

- The Secretariat in Addis sets policies and frameworks in consultation with the RCCs
- The RCCs establish Regional Surveillance and Laboratory Networks (RISLAN) between the NPHIs in their region
- RISLAN is a vehicle for several activities including:
 - Event-based surveillance and outbreak response
 - AMR surveillance
 - NCD Surveillance
 - Cross-border surveillance

Outline:

- Establishing Regional Integrated Networks
- AMR
- Role of Private Networks



Africa CDC Antimicrobial Surveillance Network

Activities

- 1) Standardize Surveillance Protocols
- 2) Strengthen Laboratory Protocols
- 3) Targets and Matrix
- 4) Regulatory Issues
- 5) Animal Health

Technical Advisory
Committee

Hospital
Acquired
Infections

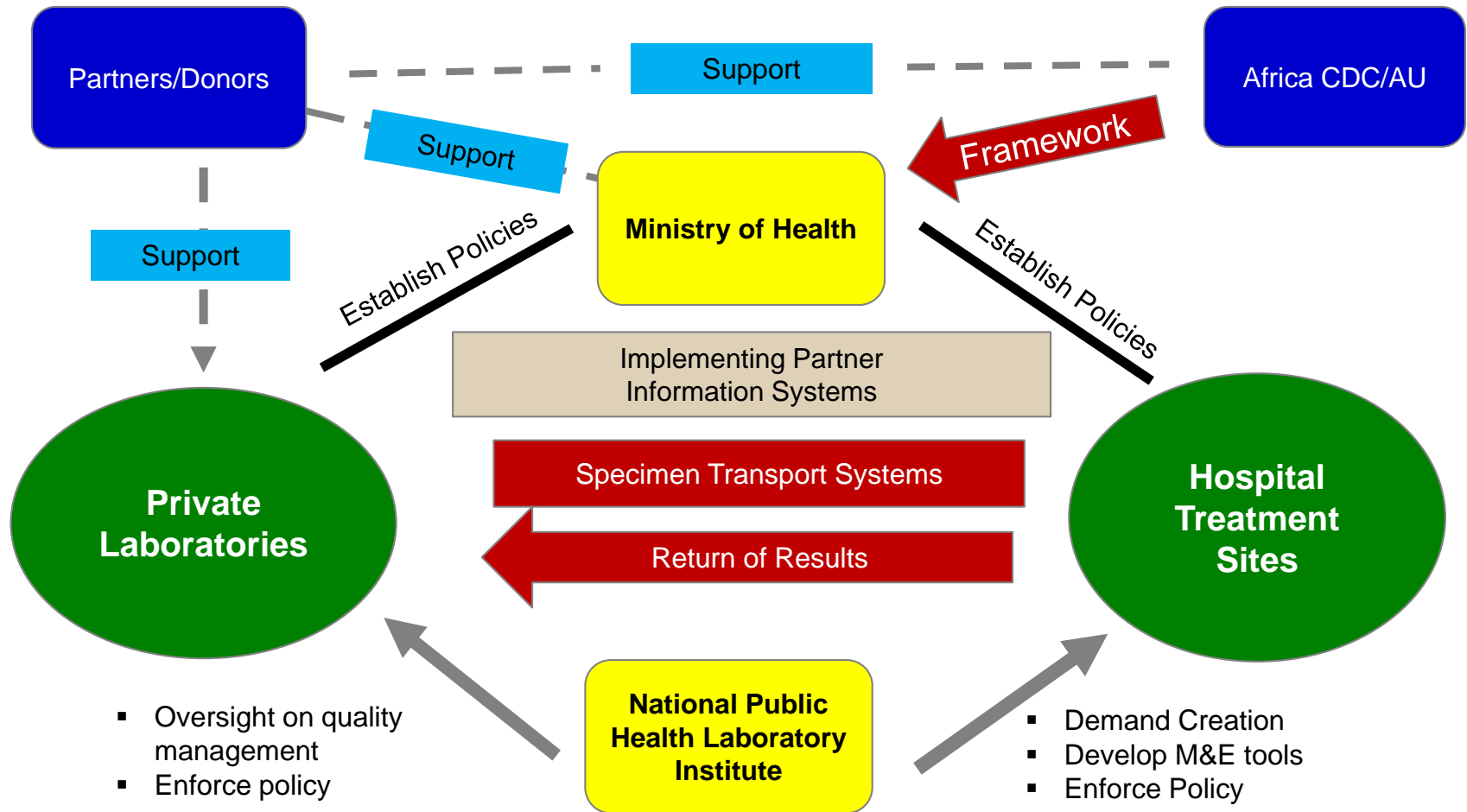
Academic
Institutions

NPHI

Partners

Animal Health
Networks

Concept of the Role of Private Laboratories for Public Health



Africa CDC Committees

Expert Technical Committee on Surveillance and Disease Intelligence

Expert Technical Committee on Preparedness and Response

Expert Technical Committee on Lab Systems and Networks

Expert Technical Committee on Information Systems

Expert Technical Committee on Public Health Research and Institutes

Antimicrobial Workforce Development Team

Africa Public Health Workforce Committee

One Health

Volunteer Program/Rapid Response Team

Community Health Care Program

FETP/Frontline

Field Laboratory Leadership and Management Program

Public Health Informatics

Special thanks to the African Union, US CDC, China CDC, the Bill and Melinda Gates Foundation, African Society for Laboratory Medicine, African Field Epidemiology Network, McKinsey & Company, and a whole host of others for their generous support to launch the Africa CDC